

Inside Outside

Subscriber Copy

THE INDIAN DESIGN MAGAZINE

ISSUE 283

JANUARY 2009

Rs 50

Artist Bose
Krishnamachari's
vibrant home.

Offices around the
world -- different
and fun!

Zaha Hadid's award winning project.





a dose of bose

When an artist's most creative outpourings are reserved for his most private space, a masterpiece is born, says Maria Louis – presenting a potent dose of the colourful Bose.

PHOTOGRAPHS: PRASHANT BHAT & COURTESY BOSE KRISHNAMACHARI



ARTIST'S AMBIENCE

A cut-out on the main door reveals a glimpse of what hints at Bose's characteristic series of Stretched Bodies...and the stunning painting is revealed in its full glory once you enter. Home is where the art is, in the case of Bose Krishnamachari – for there's evidence of the idiosyncratic artist's calling even before

you enter his suburban Mumbai apartment. One half of this space, his erstwhile studio, became his home when Bose married Radhika in 2001. Then he bought the adjoining apartment so they could accommodate their growing family more comfortably. Breaking down the wall between the two apartments and the kitchen wall of one, gave them a lavish living room

where they happily entertain their family and friends.


When the pint-sized but large-hearted artist threw a housewarming party, it was an open house...with some artists and most celebrities making their first trip to the far suburb of Borivali. Just one look at the minimalistic interiors enlivened by the vibrant strokes of the





Just one look at the minimalistic interiors enlivened by the vibrant strokes of the paintings — covering the door, gracing the walls, and embellishing the side of his school-going son's bookshelf — and you know that this is the house that Bose built!





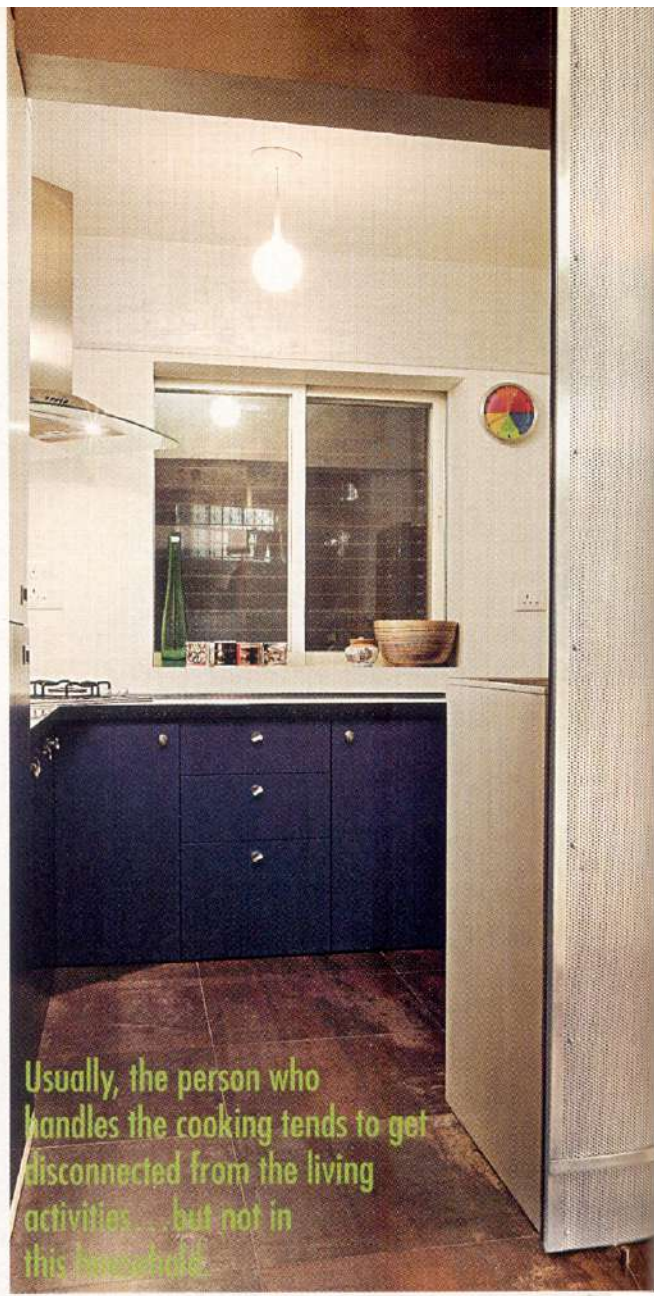
paintings – covering the door, gracing the walls, and embellishing the side of his school-going son's bookshelf – and you know that this is the house that Bose built! But the artist refrains from taking all the credit. 'I gave architect Shantanu Poredi, who I have known for over a decade, the freedom to design my home – but he gave me much more freedom,' laughs Bose Krishnamachari.

The only brief he gave his designers was that he wanted a space with minimal clutter, one that blurs the boundaries such as the inside with the outside. 'I wanted to break the monotony with the colours of my paintings,' explains the artist. Indeed, the rustic copper-hued Spanish floor tiles and the silverleaf-covered walls provide a fitting foil to his art. Expectedly, the texture and colour suggestions for the funky Oikos walls came from him...but even the lights, fans, furniture and soft furnishings have been hand-picked by the houseproud owner. 'The black coffee table with the gold centre is from Pinakin, the oval fibreglass one is from Pallate, and the translucent green chair is from Yantra.'

Flexibility of space is achieved by sliding partitions, while the

hinging/pivoting objects like the suspended Sony Plasma TV set, terrace canopy, drop-down bed in the bright-hued bedroom made to order for his children (son Aaryan, 5, and daughter Kannaki, 2), and loose furniture allow even more adaptability. 'The remodelling entailed connecting two one-bedroom apartments to create a large two-bedroom home with an open landscaped terrace,' discloses architect Manisha Agarwal, Shantanu Poredi's wife. Agreeing that the apartment is a projection of Bose's artistic leaning and flamboyant lifestyle, she adds: 'To capture the essence of Bose's work, dull metallic colours are used...with the play of natural and artificial light creating varying hues.'

A cane sofa from Good Earth and the green sofa from Red, Blue & Yellow provide comfortable seating. Some of the candlestands and lights are from store and museum shops abroad, while the rest are carefully selected from state-of-the-art lighting outlets in Lower Parel. 'The uplighter and kitchen light are by Italian lighting design company Artemide. When I travel, I collect stuff for my home from places like the Metropolitan



Museum. The museum shops abroad have interesting lights too. This clock decorated with numbers and the other one made of Murano glass are from Singapore. I like design, and I can afford to pick up such pieces,' he says matter of factly. Even the soft furnishings reflect his choice. 'The cushions are by Krsna Mehta and the bedspread in our bedroom is by Abraham & Thakore,' points out the style-savvy artist.

Radhika's special request for the kitchen design was that the cardinal direction was respected, and the right alignment for water and fire with regard to the sun and wind was upheld. Usually, the person who handles the cooking tends to get disconnected from the living activities...but not in this household. 'The double-layered brushed-finish stainless steel perforated screens shift and combine to allow for inclusion rather than exclusion of spaces,' maintains Manisha. Bose was thrilled at the use of this material. 'Some of my early works were perforated,' he recalls. 'Besides, light can pass through - which makes it more interesting.'

The versatility of the stainless steels panels permits them to be used as sliding partitions that segregate the



Lighting Fixtures: Shimera — Bose collection

Sanitary fixtures:
Citterio and Axor
Uno range

Sanitaryware:
Duravit — Starck X
— Alessi Lauffen —
Citterio

Grills: Brushed-
finish stainless
steel tensile cables

Canopy: Brushed-
finish stainless
steel structure and
GE multiwall
polycarbonate
sheets IR green

Windows:
Aluminium
anodized with
special pearl finish
and glass

Kitchen: Corian
countertop and
Hettich fittings

Doors: Brushed-
finish stainless
steel perforated
screens; wooden
doors with Duco
paint and glass
with 3 m film

Furniture Finishes:
Silver leaf — Duco
paint —
Acid-etched
glass

Flooring: Smoked
oak planks —
Engineered wood
— Cosmofloor
Tao copper homo-
geneous vitrified
Spanish Tiles



Wall Paint: Oikos

Ceiling Paint: Velvet

Switches:
Anchor woods

Art: Bose
Krishnamachari's
collection

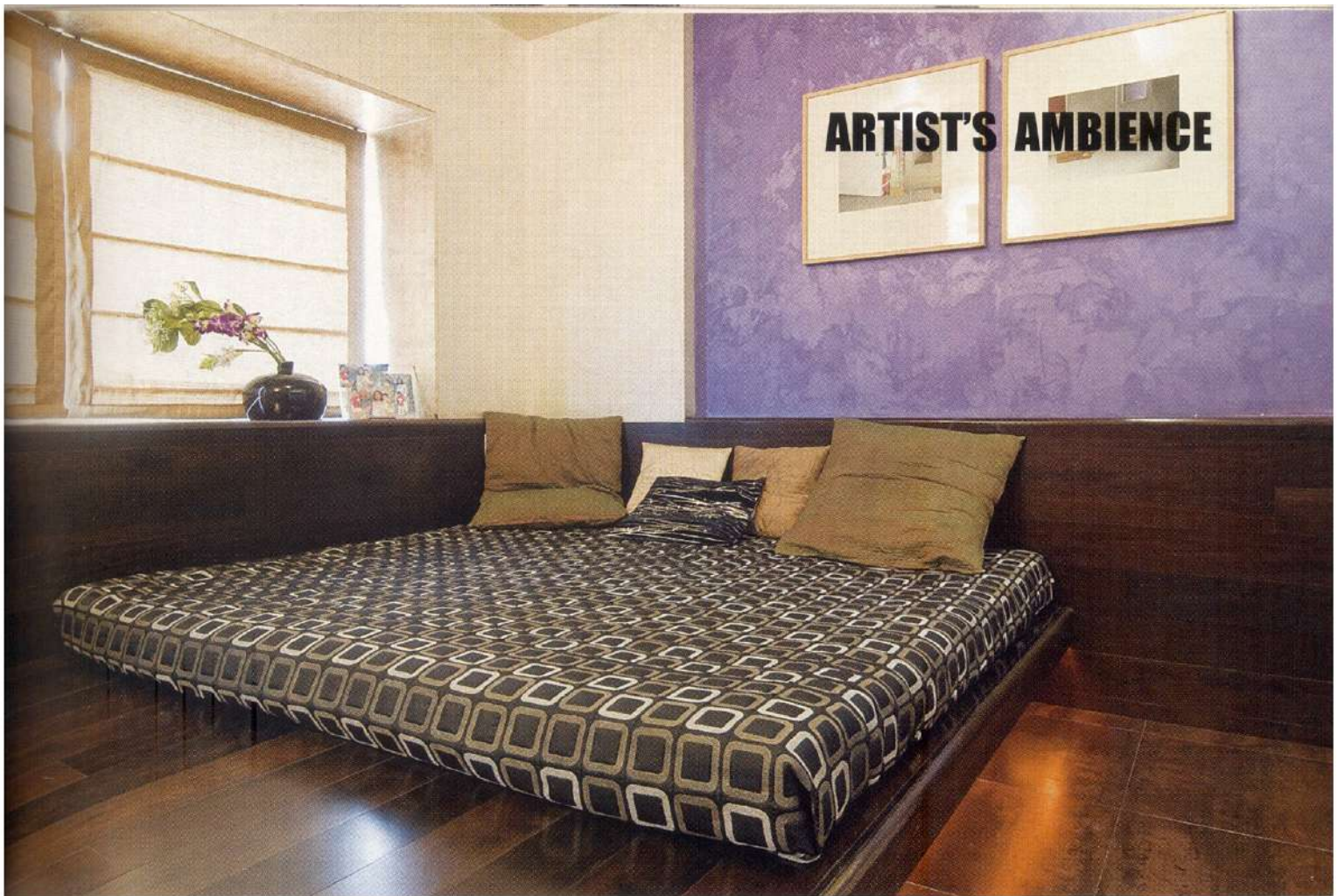
Loose Furniture:
Pinakin Patel –
Good Earth –
Yantra – Red,
Blue & Yellow

private areas from the expansive living room. 'We can shut off the master bath and bedroom when required,' demonstrates Bose, sliding one of the three top-hung panels to reveal a wall of shelves housing coloured glass and other showpieces, besides a sculpture by Sudarshan Shetty. The passage holds a shocking pink shoe-rack that echoes the bright shade used on the bookshelf across the room, while a purple wall, a silver-leafed wardrobe with frosted glass doors and a red alcove holding mementoes characterise the master bedroom beyond. On one side of the wall fronting the open kitchen nestles a wine bar – perfect for the home of the great entertainer.

What forms the piece de resistance, however, is the terrace. Coming from the verdant luxury of his native Kerala to the concrete jungle of Mumbai was not an easy transition for Bose, who longed for a bit of that openness to nature he once enjoyed. His architects fulfilled his dream by introducing large uninterrupted windows between both bays of the living room and terrace for visual relief. By providing a wide window seat, they created a functional connection between the two areas. Finally, the large doors leading to the



Even the soft furnishings reflect Bose's choice. 'The cushions are by Krsna Mehta and the bedspread in our bedroom is by Abraham & Thakore,' points out the style-savvy artist.



ARTIST'S AMBIENCE



terrace outside bring openness and light inside. Manisha reveals that they tried to make top-hung mechanised doors powered by hydraulic pumps...but these did not work, as the result turned out to be very heavy. 'We would have liked these doors to act as canopies when opened out,' she sighs regretfully.

Bose finds the 360-degree movement of the TV suspension practical; but had he been aware of it, he would have opted for the model that can be moved upwards when not in use. He has no other regrets...and is delighted that his own studio carpenters, who have been with him for the last 15 years, worked on the project. 'They have done a good job and the finish is excellent,' smiles the satisfied owner. That's an understatement, since this home is a moving work of art! 