

AGATA TOROMANOFF

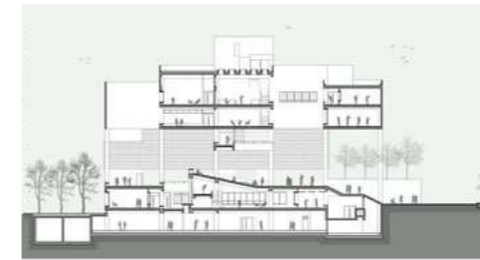
BRUTALISM REINVENTED

21ST CENTURY MODERNIST ARCHITECTURE

 PRESTEL



Adjusted to the sloped terrain, the building is a massive complex of three interconnected spaces. Each space is dedicated to particular programme and takes a different architectural form, but all are informed by the Brutalist aesthetic.



Sections

SCHOOL OF PLANNING AND ARCHITECTURE // MOBILE OFFICES / MO-OF

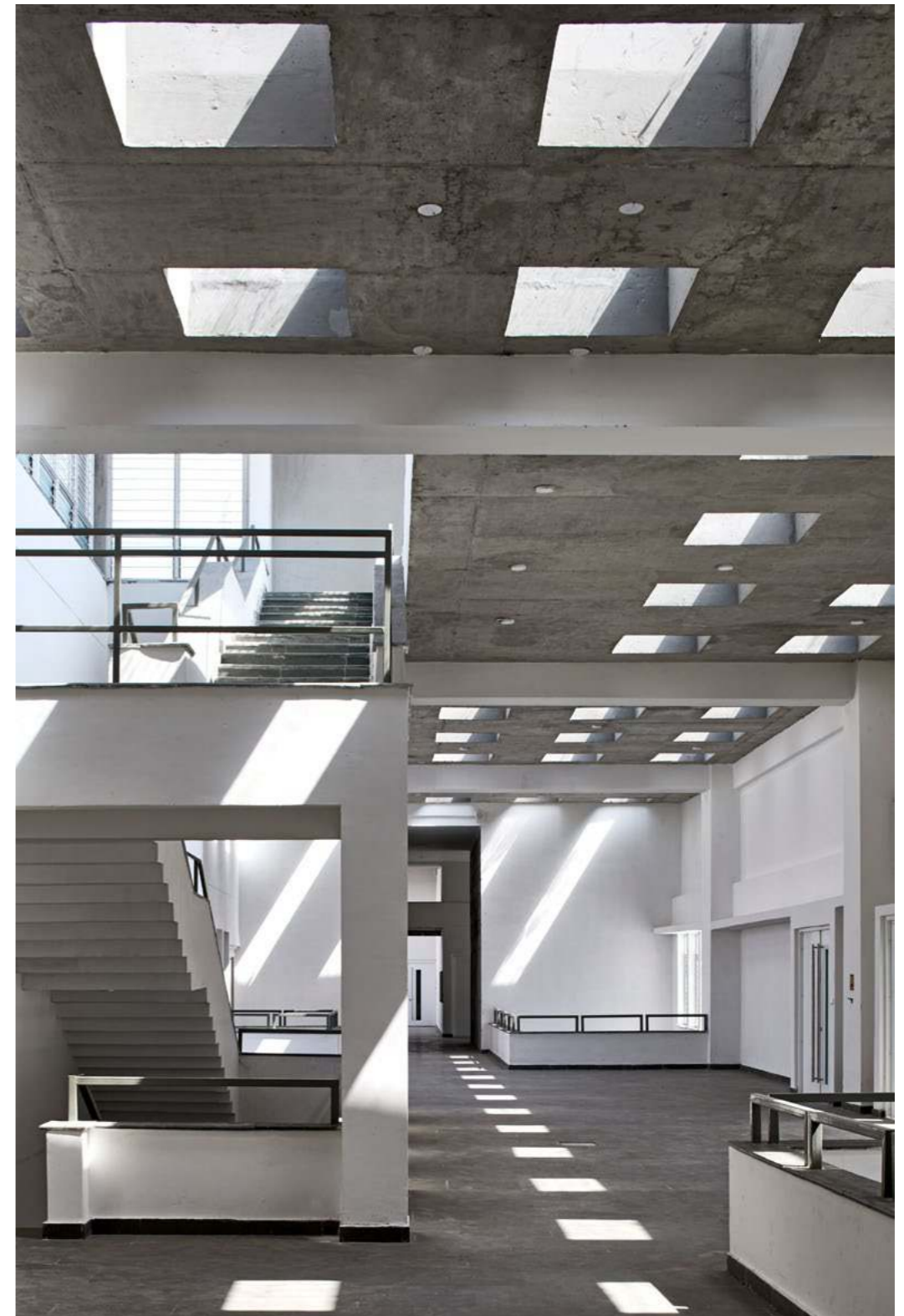
VIJAYAWADA, INDIA 2018

The gigantic building of the School of Planning and Architecture has been envisioned as a gateway to the entire campus in the city of Vijayawada, India. Drawing from the aesthetic of Brutalism, the architects, Mobile Offices / MO-OF, designed a visually strong building that is also responsive to the extreme local climate. The large volume is made of a mélange of concrete, stone, Corten Steel, and bricks in a way that exposes all materials in their raw forms. Another characteristic aspect defining the style are the voids that puncture the building. The structure's complexity creates many opportunities for the play of light and shadows while also playing a crucial role in air circulation. "Passive energy systems are incorporated into the design via courtyards that funnel winds through the building and enable cross-ventilation, thus regulating the diurnal temperatures," explain the architects. Many of these spaces are intended to function as social exchange spots for the students.

The building is divided into three sections – The Parasol, Concourse, and the Platform. Circulation as well as the varying levels of privacy of diverse programmes are at the core of their arrangement towards each other. The first one dominates over the structure and houses the morning programmes, acting as an umbrella-like roof with a shaded area below. The Concourse is the central section and functions as traditional courtyard for public and community programmes. The ground floor part of the building is called the Platform and houses afternoon classes, workshops, and laboratories. The architects decided to punctuate the base with voids to remove hot air from the building.



The spectacle of light plays an important role across this complex building. The architects created many opportunities for the interplay of light and shadows throughout the day, be it through the punctures cast in the corridors or through cladding on the outer walls.



The perforations in the corridors look particularly interesting. While providing a visual spectacle, they also highlight the thickness of the raw concrete walls.

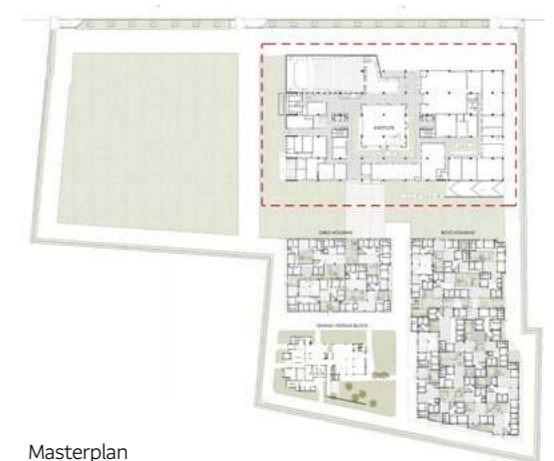


Ground Floor Plan

The building consists of three sections. While the communication across them is organised with the help of staircases and bridging, many passages are roofed outdoor areas. The Parasol, the top section of the building, in particular, creates a spacious shaded space, offering protection from the sun.



Roofed and well-ventilated outdoor spaces are crucial given the local climate. These areas, in particular, function as spacious and pleasant meeting spots for the students.



Masterplan